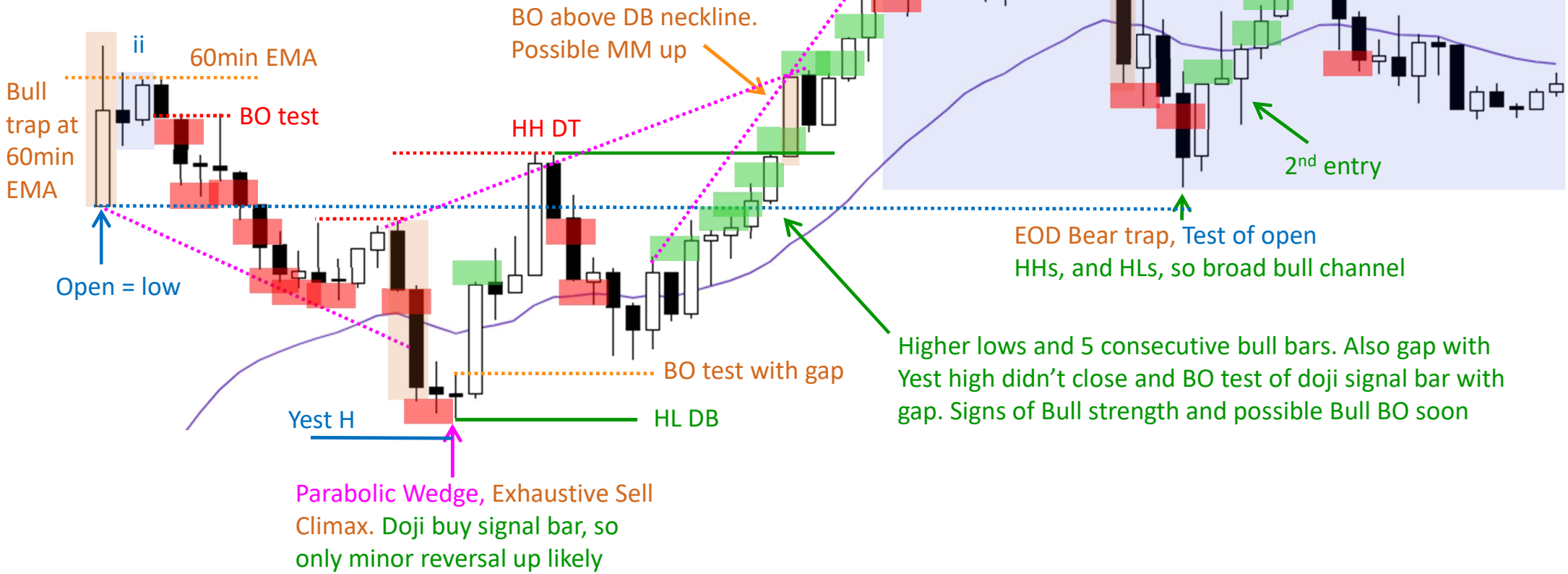


08/04/25 – Gap up & Bull Trap at 60min EMA : then, Parabolic Wedge Bottom

On Daily chart, open of the day is low of the day only about once a year. 99% of bars have at least a small tail above and below. 95% of time, when open of the 1st 5min bar is the low, there is an early PB below the open (like today). If not, there is usually a later reversal to below the open.

14 bar bull micro channel
 Consecutive Wedge tops, Final flag reversal
 DB MM
 Bear Surprise. At least a small 2nd leg down likely



11/04/25 – Gap up & PW Buy Climax : then, Trading Range

Today is Friday
so weekly S/R
are magnets

Last week low

Just high 1 buy signal
after a buy climax in a
possible TR. Don't buy

HH DT, Wedge
Minor reversal since
small PB bull trend

LH DT, Low 2, LH MTR,
Bar 48 midday reversal

Consecutive bear bars closing near
their lows and below EMA with 2nd
body completely below EMA. Sell
The Close for possible MM down



Open = low

Big gap up of 280 points and Major Bull
surprise – 120points. Possible Low of the day.
Bull trend or TR day likely. Bear trend unlikely

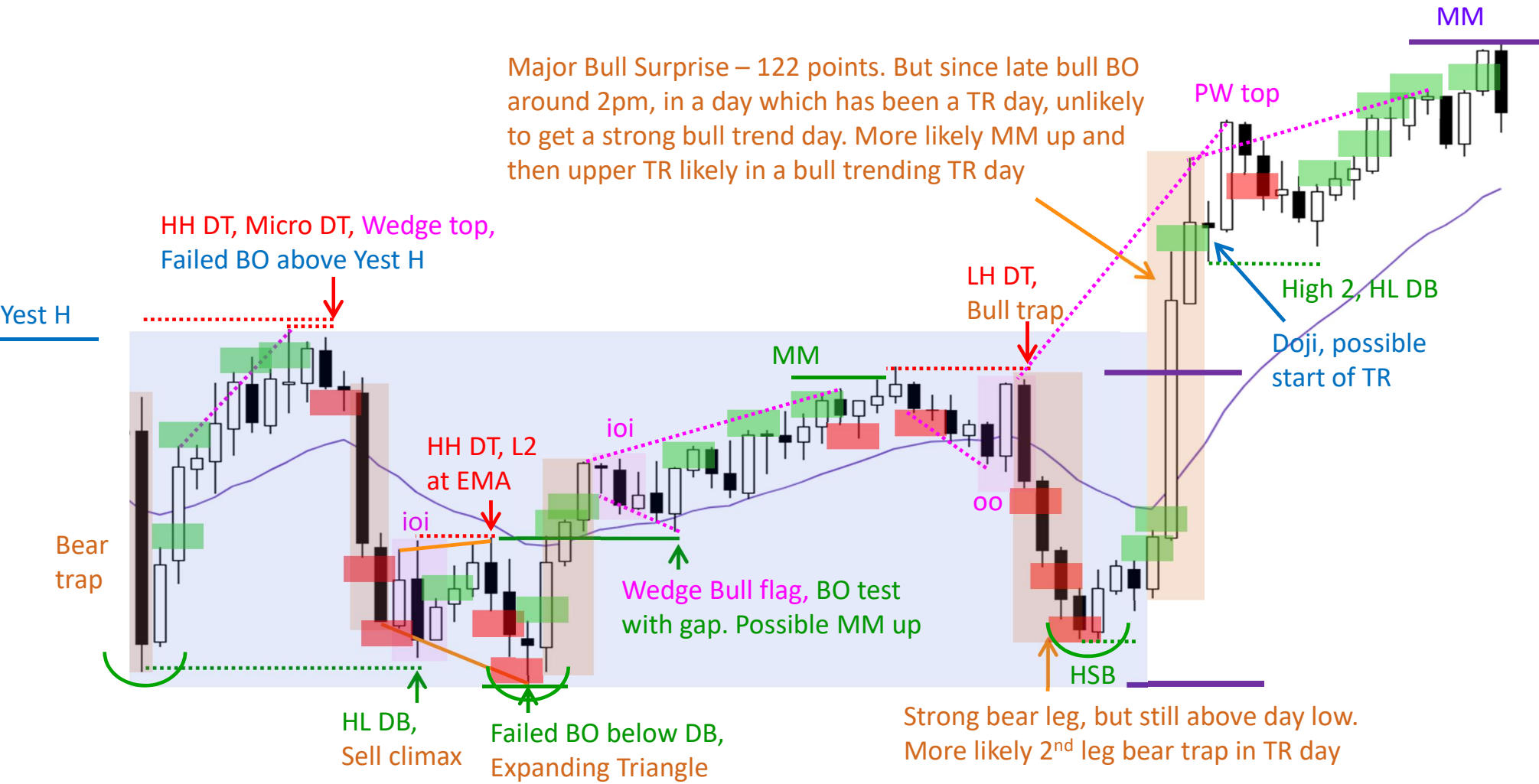


Big bull bar late in trend, but possible
Measuring gap since small PB bull
trend. However, closed the gap and
became exhaustive buy climax

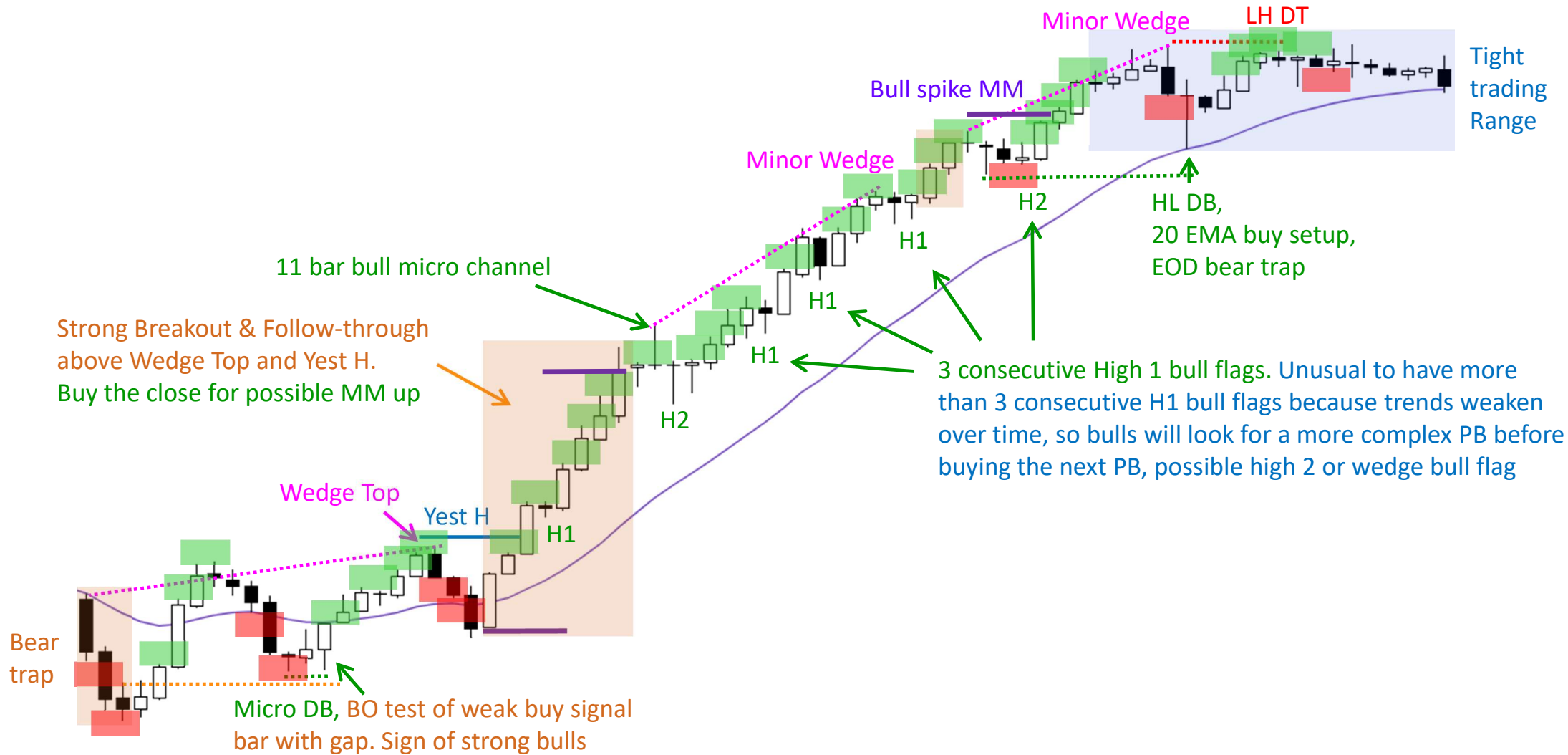
On Daily chart, open of the day is low of the day only about once a year.
99% of bars have at least a small tail above and below.
95% of time, when open of the 1st 5min bar is the low, there is an early
PB below the open. If not, there is usually a later reversal to below the
open. However, today opened at low & then a major bull BO of 120
points. So, possible low of the day and remained as low of the day

16/04/25 – Trading Range Open: 2nd leg Bear trap, then Late Bull BO

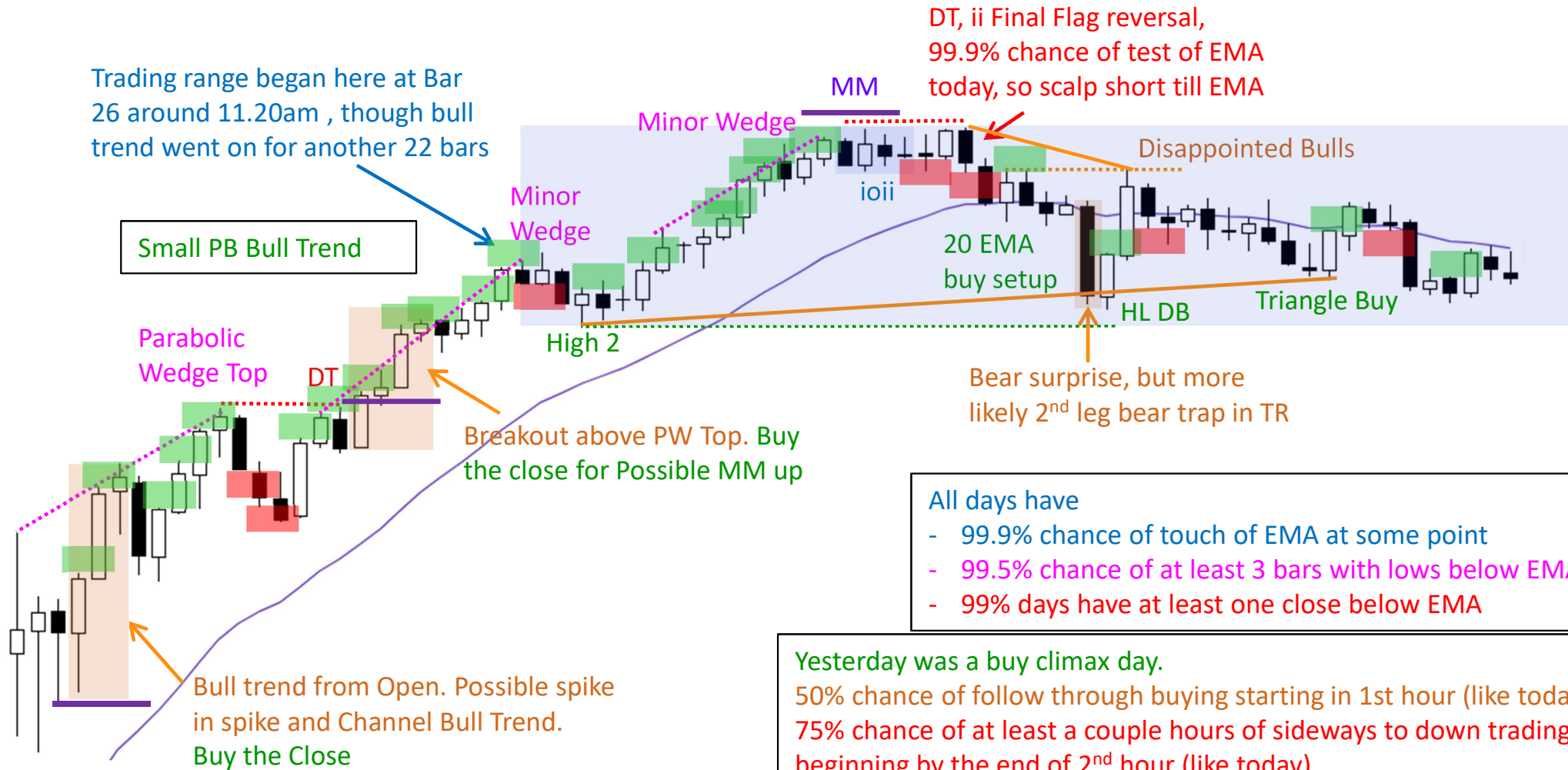
Major Bull Surprise – 122 points. But since late bull BO around 2pm, in a day which has been a TR day, unlikely to get a strong bull trend day. More likely MM up and then upper TR likely in a bull trending TR day



17/04/25 – Wedge Top : Bull Breakout and Small PB Bull Trend



21/04/25 – Bull trend from open : ii Final Flag, then Trading Range



- All days have
- 99.9% chance of touch of EMA at some point
 - 99.5% chance of at least 3 bars with lows below EMA
 - 99% days have at least one close below EMA

Yesterday was a buy climax day.
 50% chance of follow through buying starting in 1st hour (like today)
 75% chance of at least a couple hours of sideways to down trading beginning by the end of 2nd hour (like today)
 Only 25% chance of another strong bull trend day (not today)

22/04/25 – Bear Trap : Bull trend from Open, then Trading Range

Major Bear surprise – 120 points. So Bear trend or TR Day likely

Minor Wedge since tight bull channel

Exact 100 points from Buy signal on bar 2

DB MM

LH DT

Triangle Buy but 6 bar bear micro channel. Wait for 2nd entry

DT, Low 2 at EMA

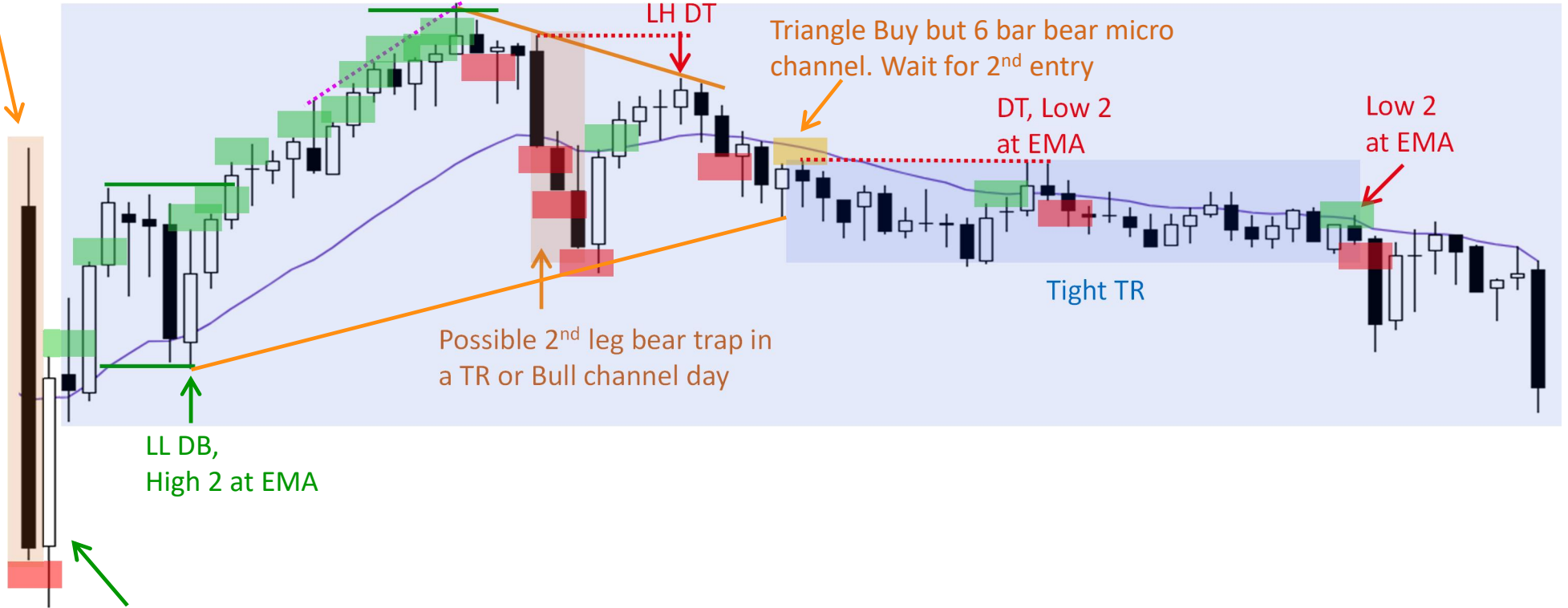
Low 2 at EMA

Tight TR

Possible 2nd leg bear trap in a TR or Bull channel day

LL DB, High 2 at EMA

Strong bull Bar. Buy for possible bear trap and opening reversal up



23/04/25 – Gap up & LH DT : Sell Climax, then Bull Channel Reversal up



23/04/25 – PW Sell Climax : Relentless Buying, & Bull Channel till EOD



24/04/25 – Bull Trap & TR Open : Remained a TR Day on Expiry

Small Range Day – 130 points and no swing trade of 100 points today.

Yest H

There were bars to the left and still below PDH. More likely bull trap

DT with PDH

Wedge Top, HST

54 points Tight Trading range. Though LHs and LLs, but mostly sideways

Low 2

DT

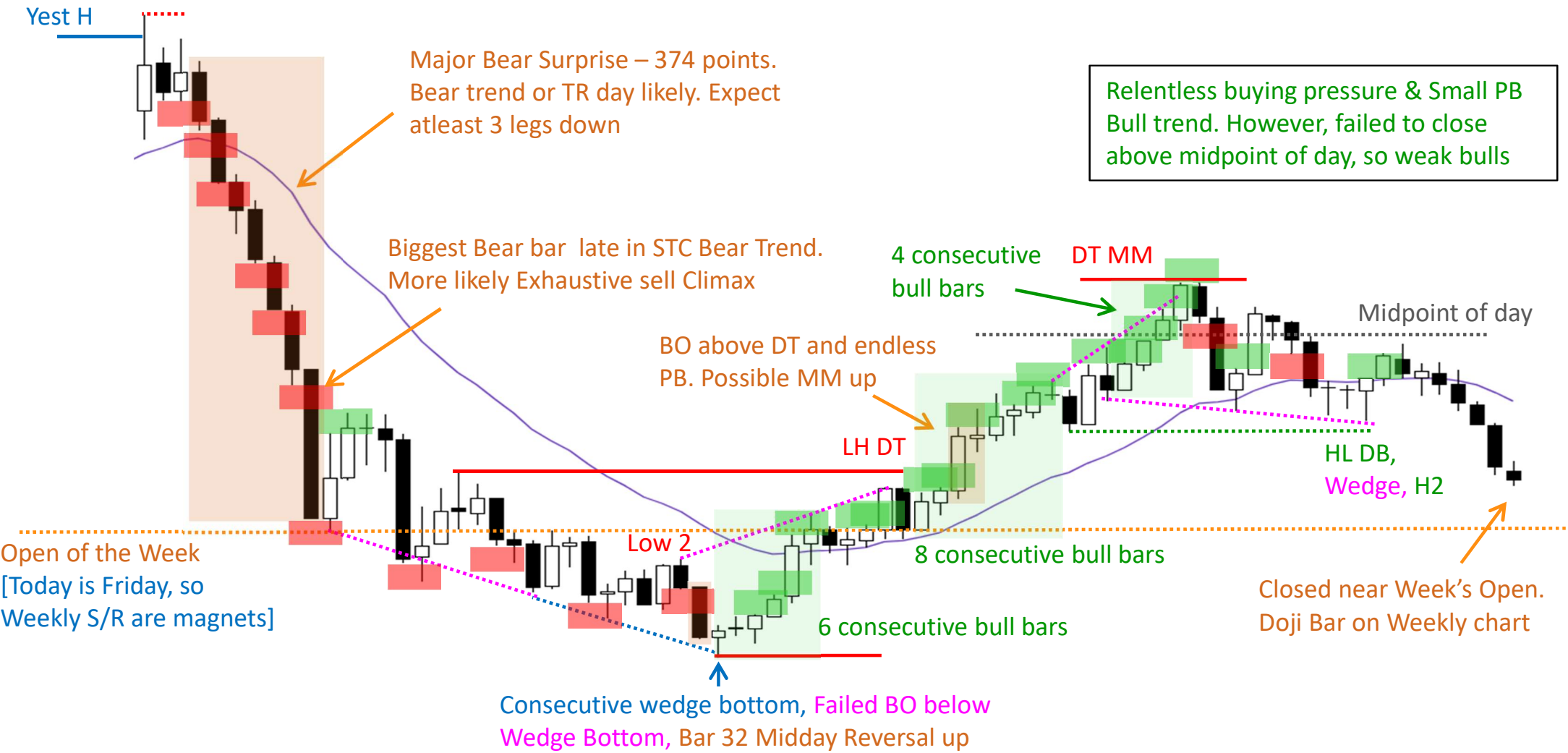
Day Low

LL DB

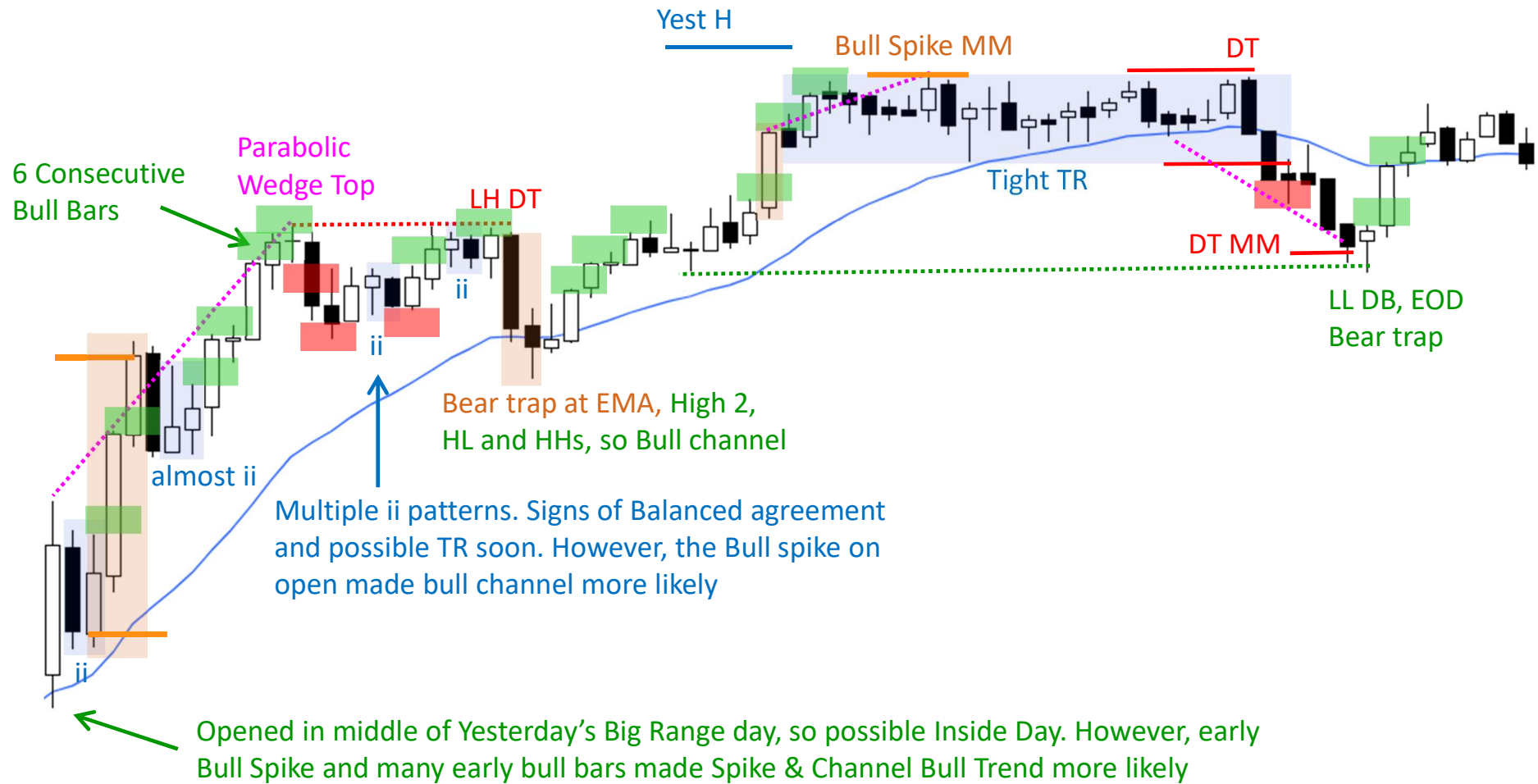
Test of bear buy signal bar

Late Bear BO in a TR day. More likely Bear Trap

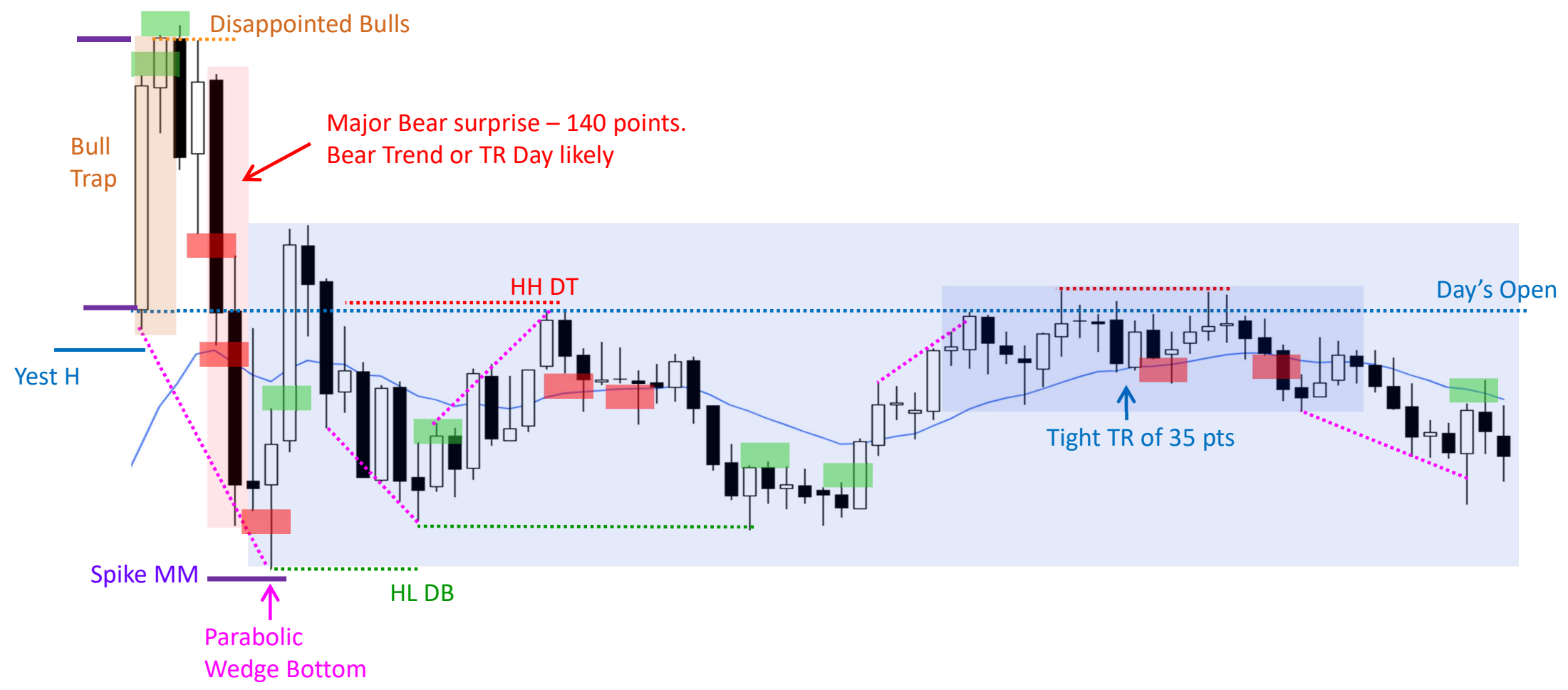
25/04/25 – Bear Trend from Open : Consecutive Wedge bottom, then Small PB Bull Trend



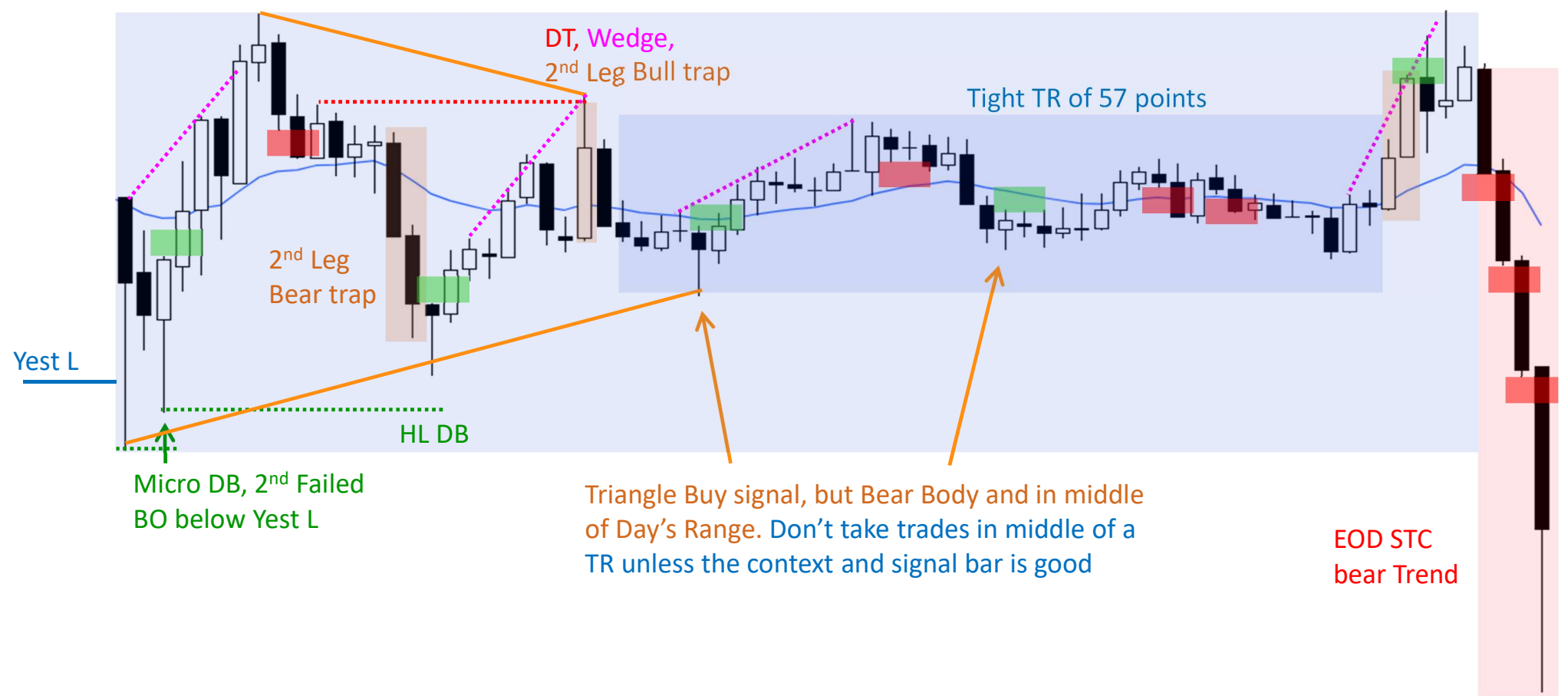
28/04/25 – Bull Trend From Open : Spike & Channel Bull Trend



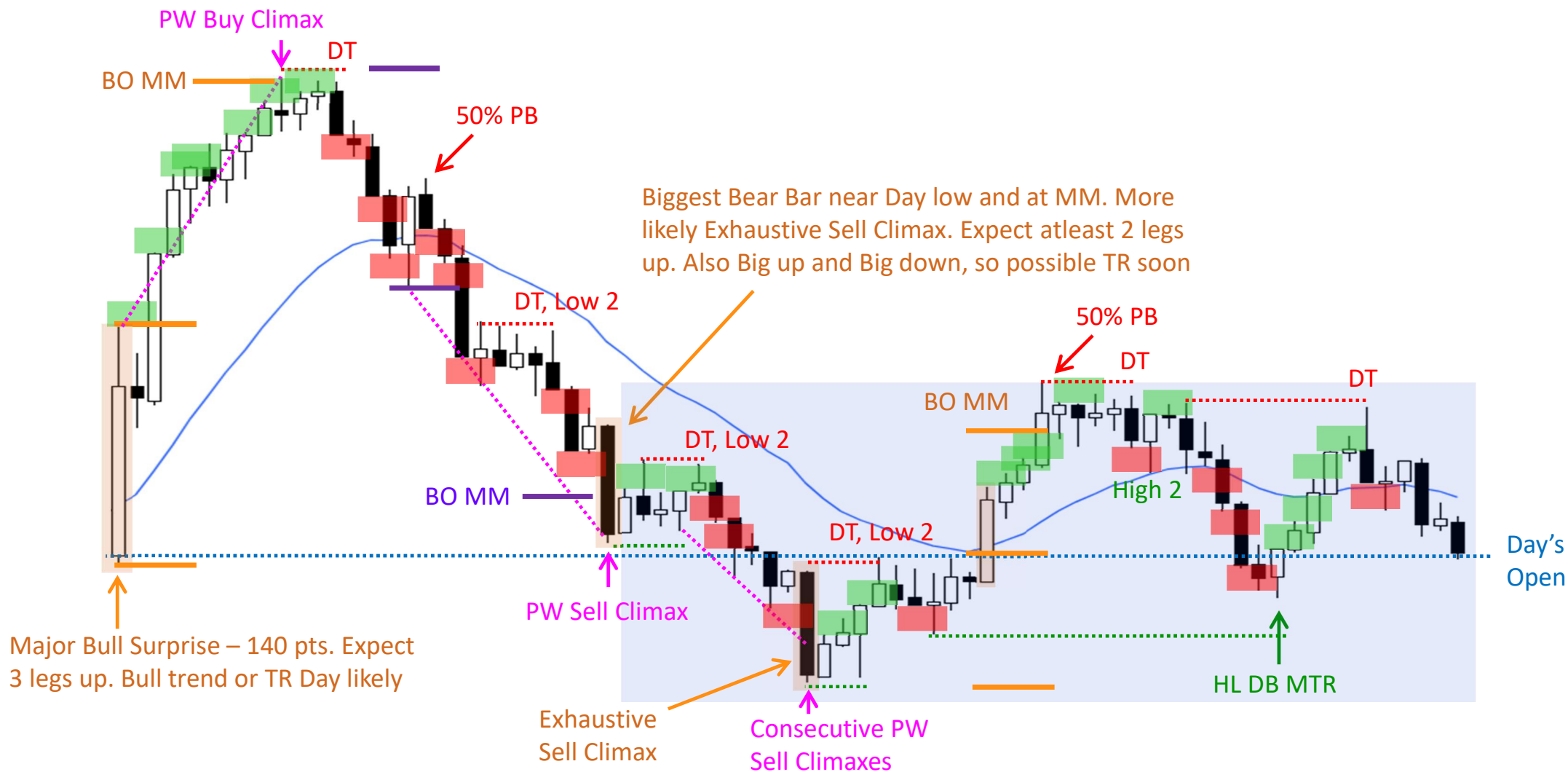
29/04/25 – Bull Trap & Failed BO of Yest H : PW Bottom, then TR



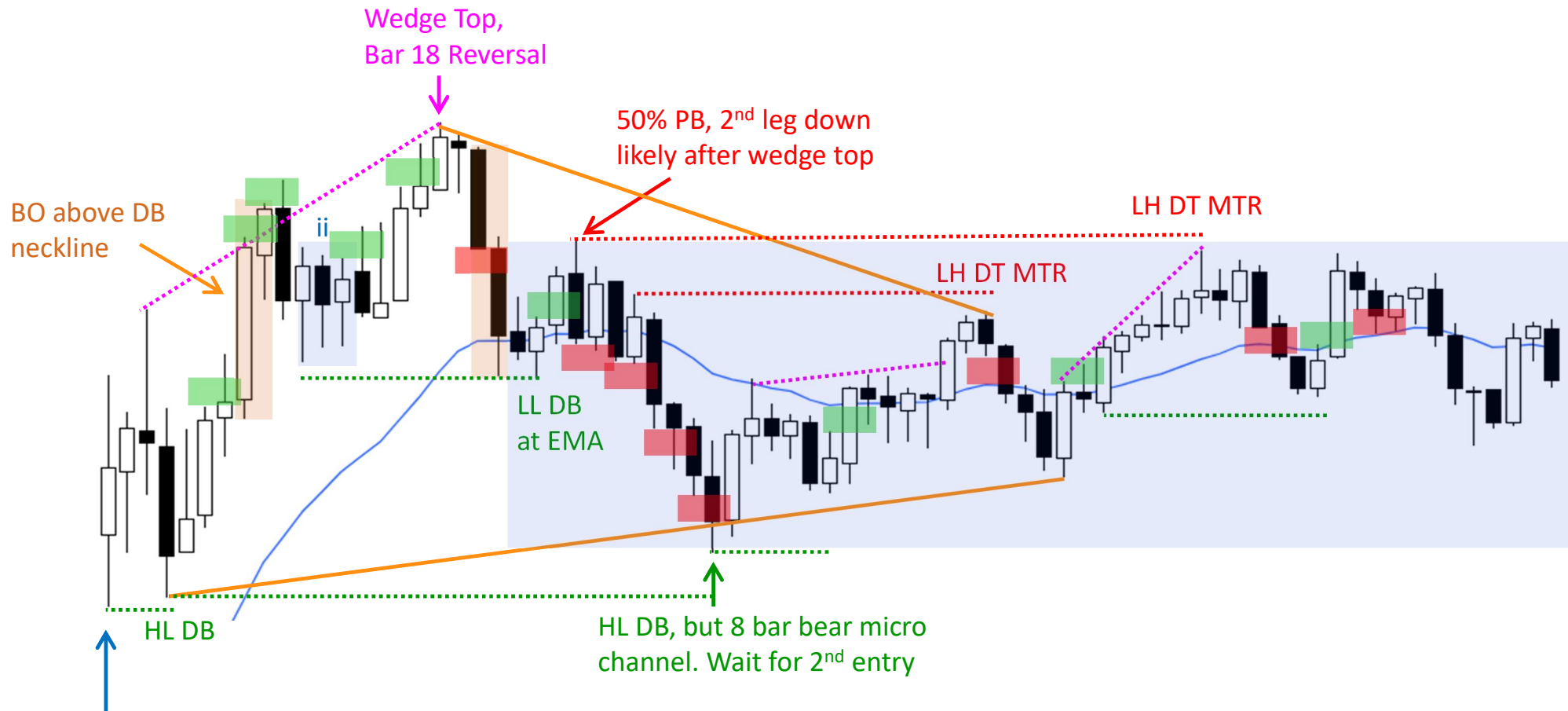
30/04/25 – Triangle Open : Small TR Day, then EOD STC Bear Trend



02/05/25 – PW Buy Climax : Bear Reversal and Exhaustive Sell Climax



05/05/25 – HL DB & Wedge Top : then Trading Range

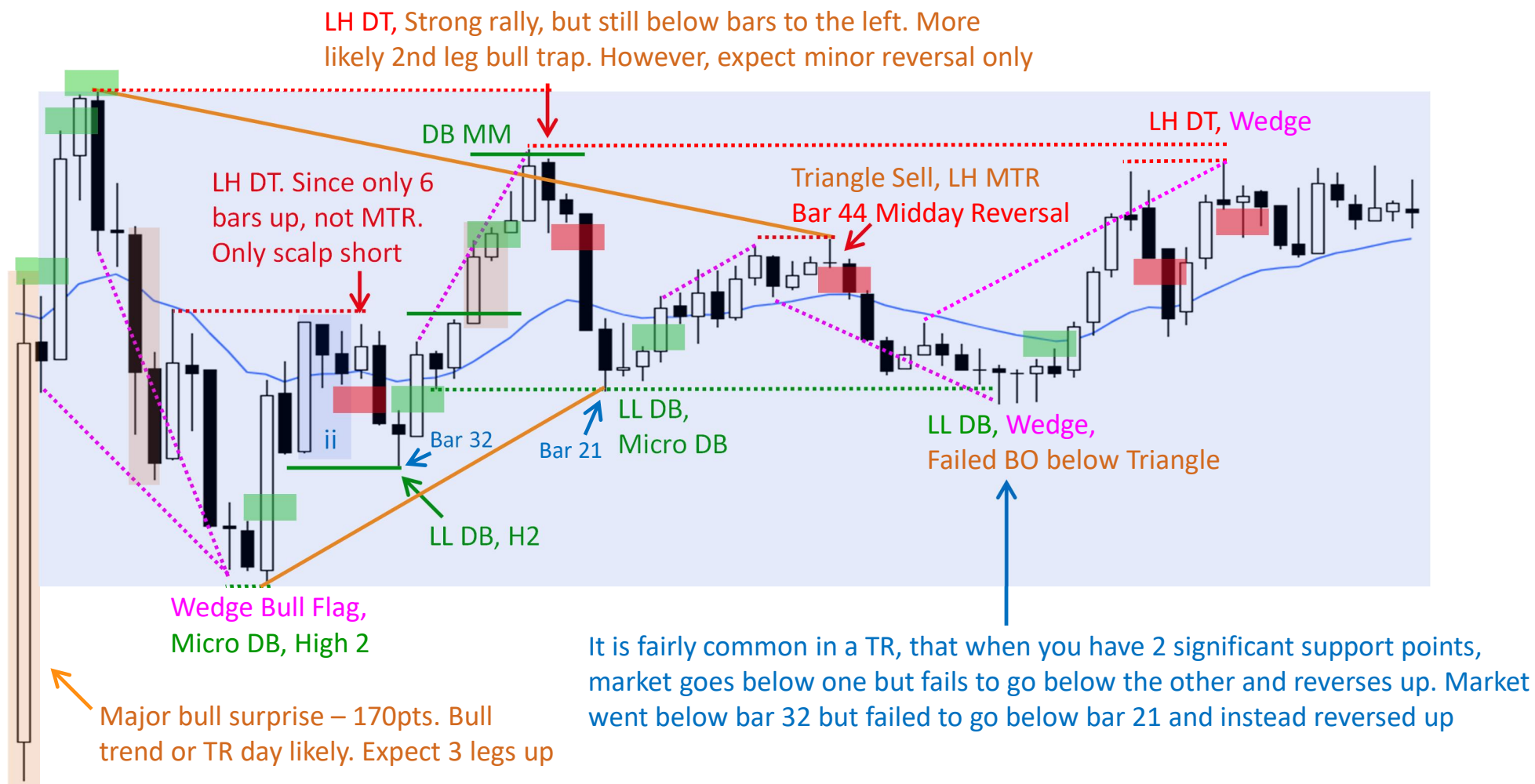


Yesterday was a big range day – 350 pts, and today market opened in middle. Possible inside day. Look to BLSH and scalp

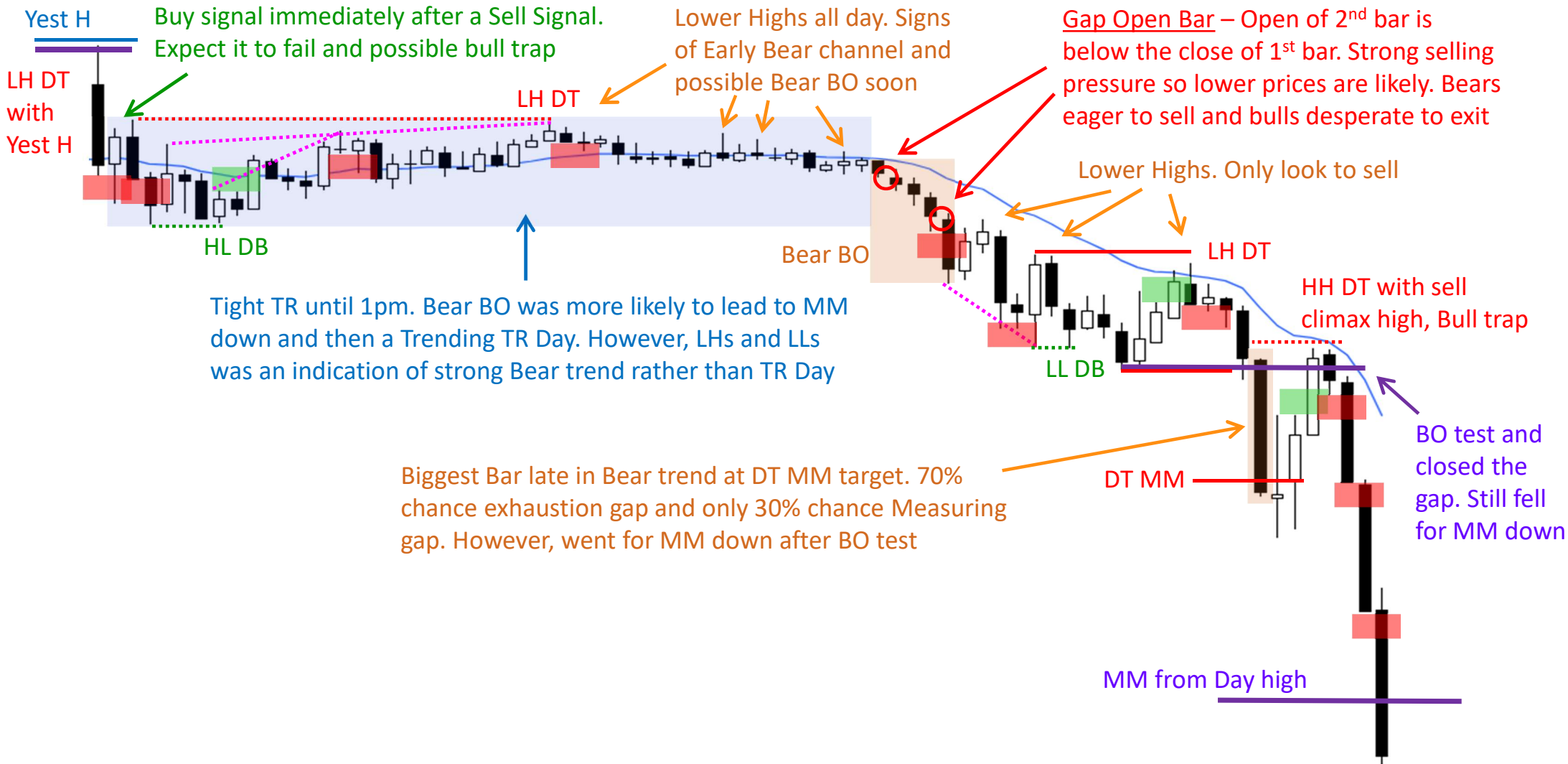
06/05/25 – Bear Trend from Open : Wedge Bottom, then TR



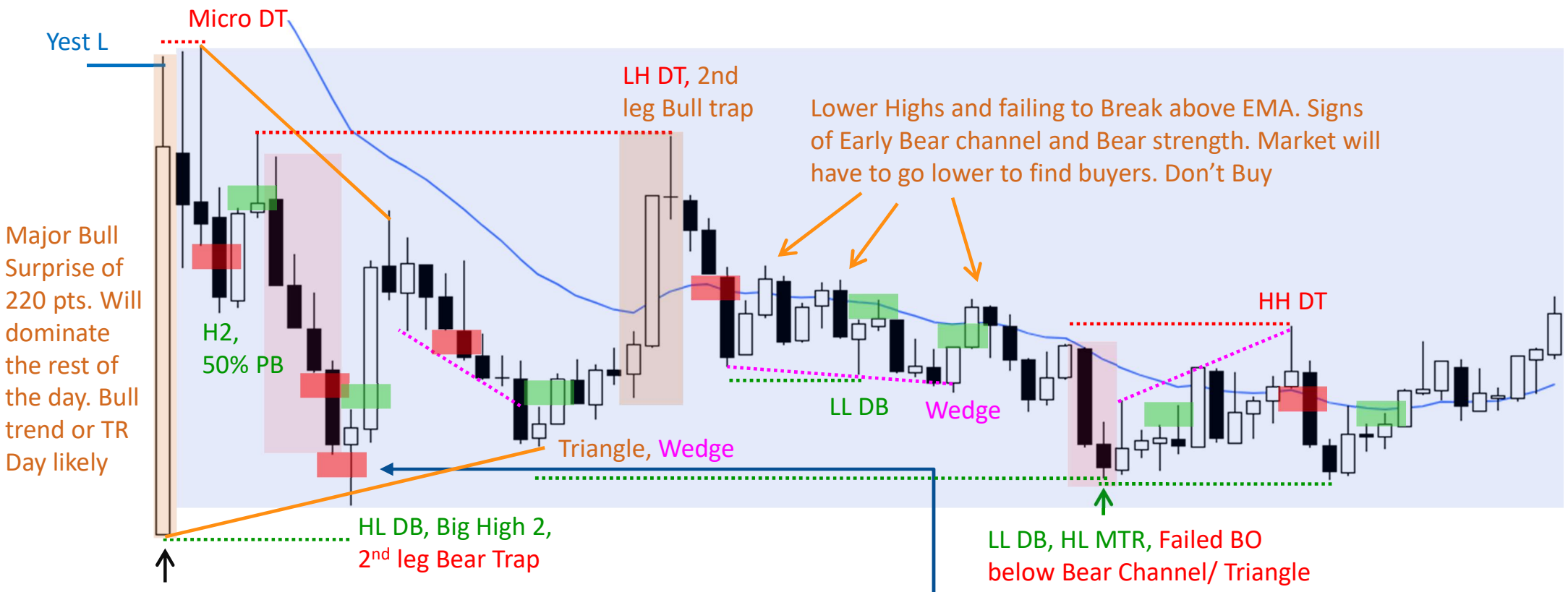
07/05/25 – Buy Climax on Open : Deep Pullback, then Trading Range



08/05/25 – Trading Range Open : TTR with minor LHs, then Bear BO



09/05/25 – Big Gap Down & Major Bull surprise : Deep PB, then TR Day

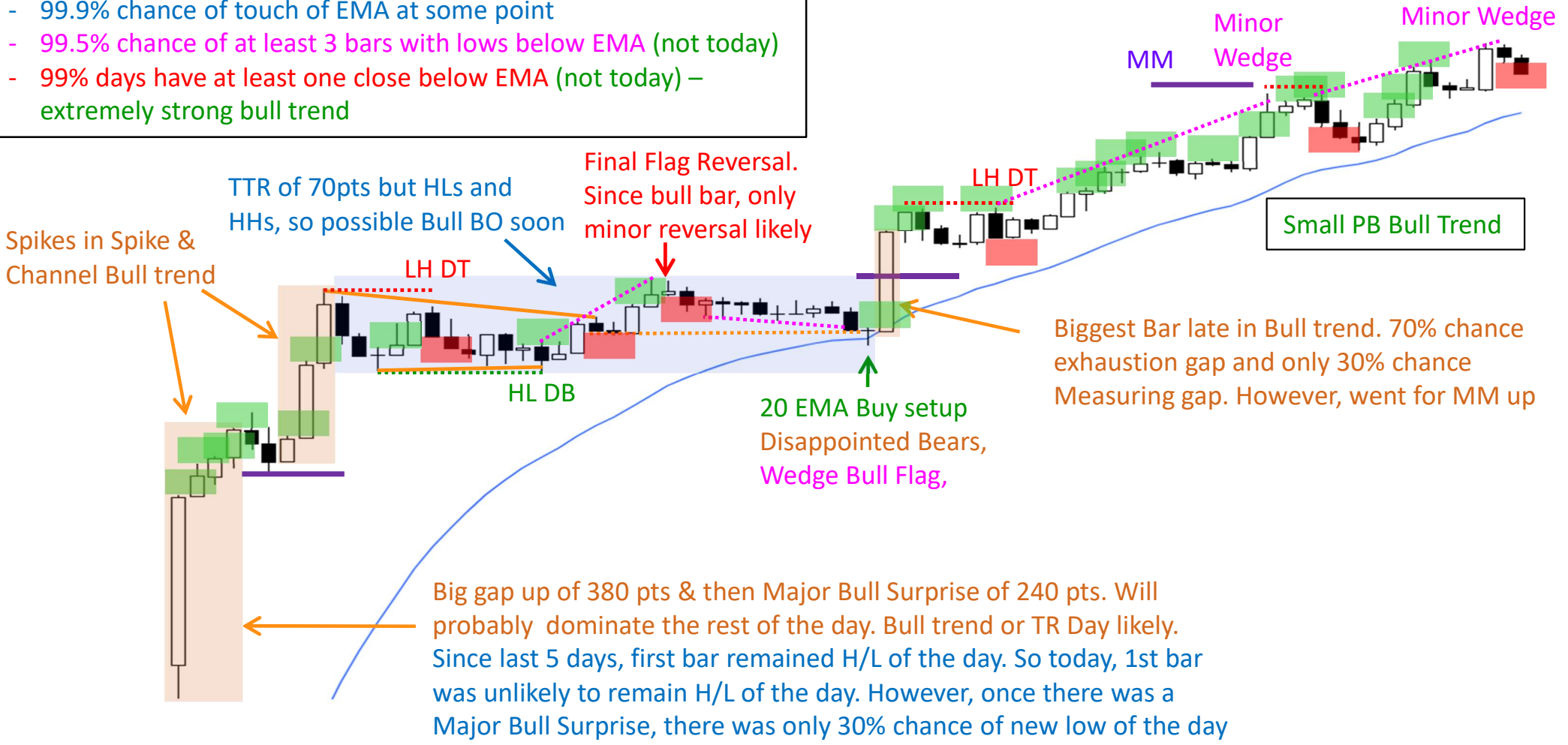


Today's open = Low. Will act as a magnet. However, it remained low entire day. On Daily chart, open of the day is low of the day only about once a year. 99% of bars have atleast a small tail above and below. However, once there was a Major bull Surprise, there was only a 30% chance of new low of the day

IF you're already short, exit here since possible 2nd leg bear trap. But can't buy since 4 bear bars. If after exiting, there's a bear bar closing on its low, sell again

12/05/25 – Bull Trend from Open : Major Bull Surprise, then Small PB Bull trend

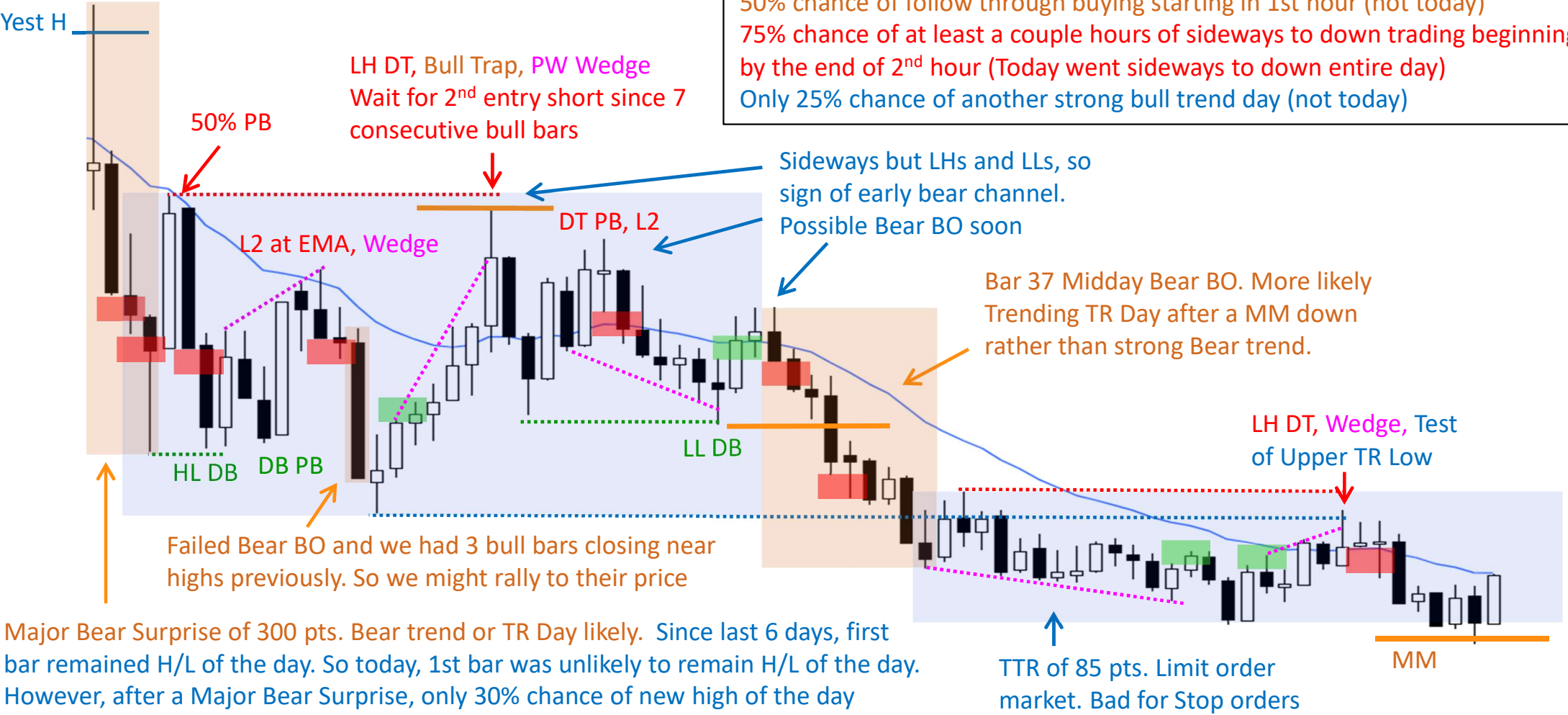
- All days have
- 99.9% chance of touch of EMA at some point
 - 99.5% chance of at least 3 bars with lows below EMA (not today)
 - 99% days have at least one close below EMA (not today) – extremely strong bull trend



Big gap up of 380 pts & then Major Bull Surprise of 240 pts. Will probably dominate the rest of the day. Bull trend or TR Day likely. Since last 5 days, first bar remained H/L of the day. So today, 1st bar was unlikely to remain H/L of the day. However, once there was a Major Bull Surprise, there was only 30% chance of new low of the day

13/05/25 – Sell Climax on Open : Reversal up Failed, then Bear Trending TR Day

Yesterday was a buy climax day.
 50% chance of follow through buying starting in 1st hour (not today)
 75% chance of at least a couple hours of sideways to down trading beginning by the end of 2nd hour (Today went sideways to down entire day)
 Only 25% chance of another strong bull trend day (not today)



Major Bear Surprise of 300 pts. Bear trend or TR Day likely. Since last 6 days, first bar remained H/L of the day. So today, 1st bar was unlikely to remain H/L of the day. However, after a Major Bear Surprise, only 30% chance of new high of the day

14/05/25 – Bull Trend from Open : PW Top, then Bear Reversal & TR

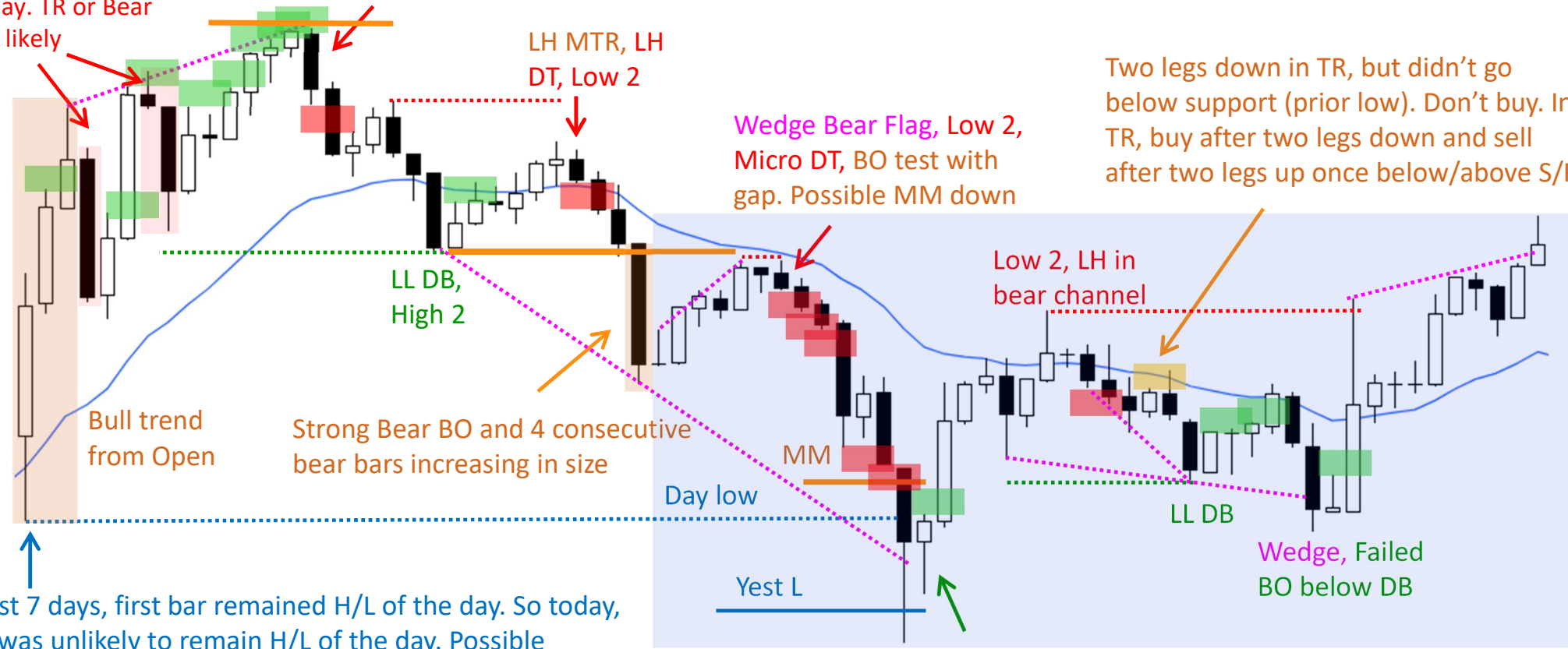
Strong bear reversals.
Bull trend is unlikely to last all day. TR or Bear reversal likely

PW Top, but 7 bar bull micro channel. Expect minor reversal

LH MTR, LH DT, Low 2

Wedge Bear Flag, Low 2, Micro DT, BO test with gap. Possible MM down

Two legs down in TR, but didn't go below support (prior low). Don't buy. In TR, buy after two legs down and sell after two legs up once below/above S/R



Since last 7 days, first bar remained H/L of the day. So today, 1st bar was unlikely to remain H/L of the day. Possible opening reversal either earlier in the day or around 10.30am or 12.30pm. Here we got reversal around 10.30am

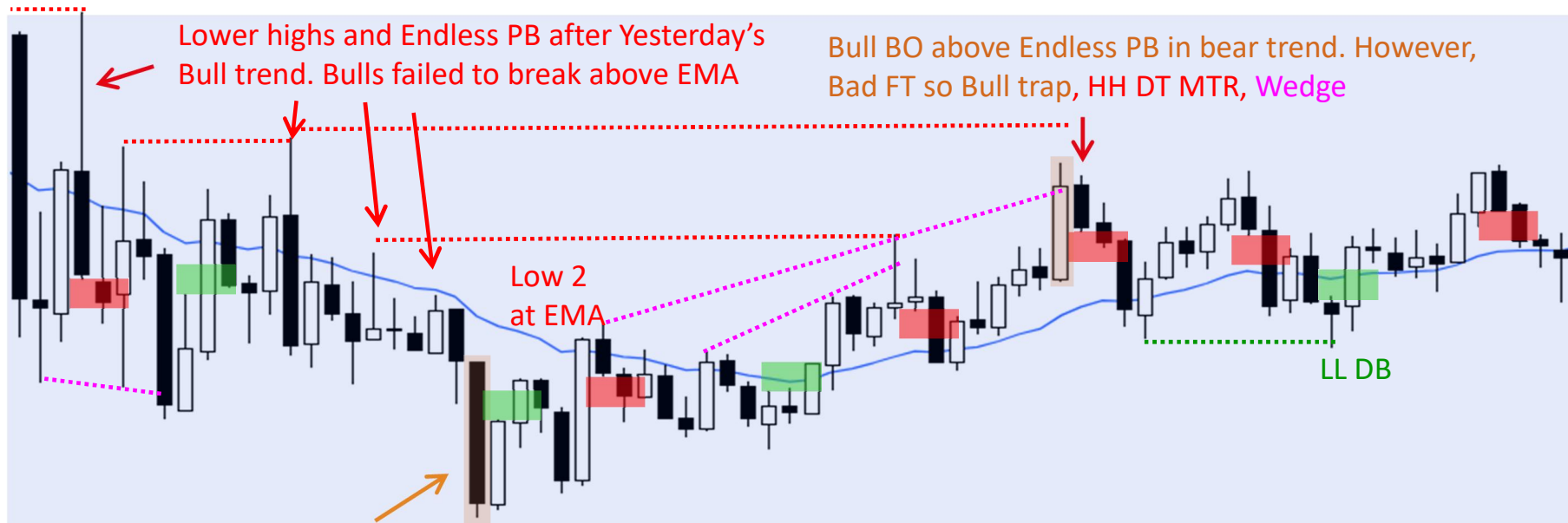
Strong Bear BO and 4 consecutive bear bars increasing in size

Wedge Bottom, Failed BO below PDL.

Day's Range more than half of average (190pts), so unlikely to fall far below day low. However, 8 bar bear micro channel. Expect minor reversal up & TR

16/05/25 – Endless PB on Open : Bear BO failed, then TTR

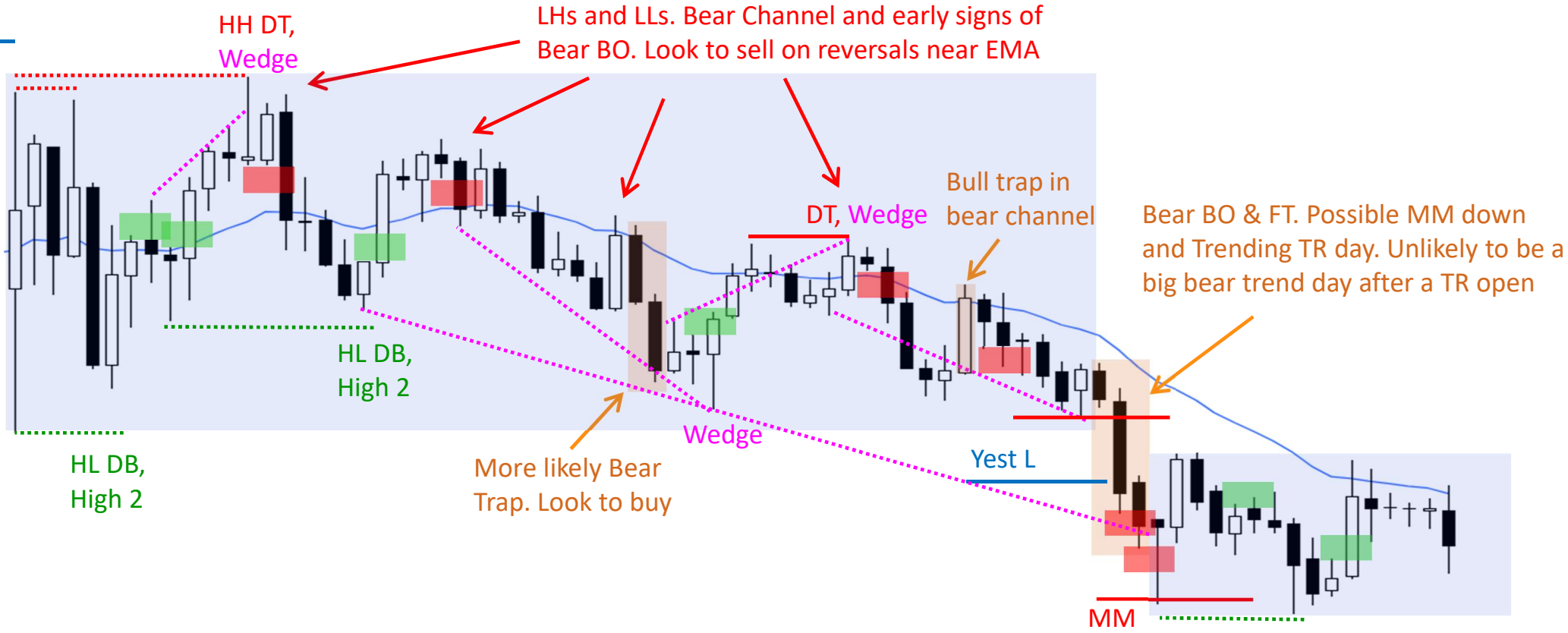
Small Tight TR day – 115 pts. Limit order market. Bad for Stop Orders



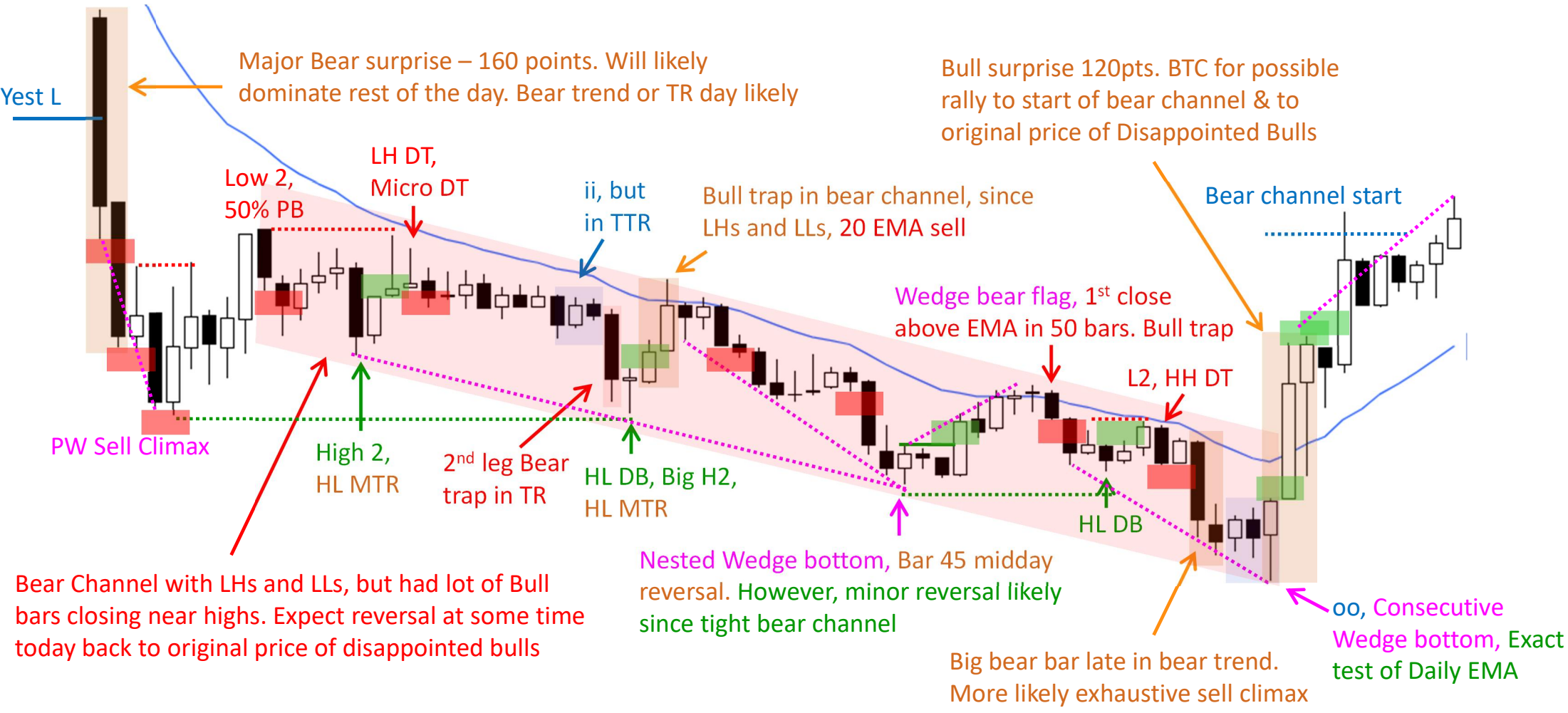
Bear BO below Endless PB in bull trend. However, Bad FT, so possible Bear trap in TR

19/05/25 – TR Open : HH DT, then Bear Channel & Trending TR Day

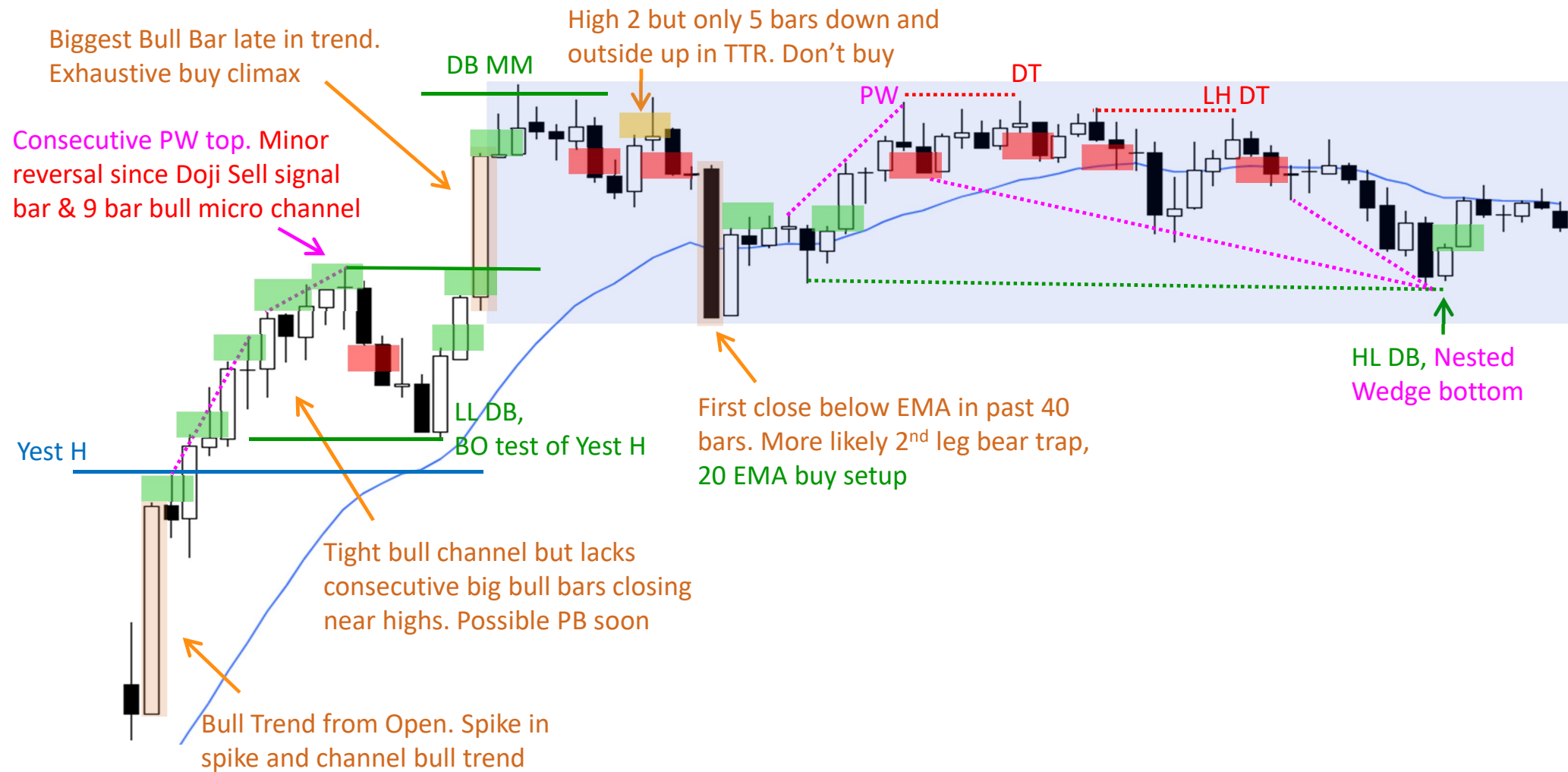
Yest H



22/05/25 – Spike & Channel Bear Trend : Exhaustive Sell climax, then EOD BTC rally



23/05/25 – Bull Trend from Open : Exhaustive buy Climax, then TR



26/05/25 – PW Buy & Sell Climax : then, Trading Range

